



## SonicWALL TZ Series

NETWORK SECURITY

**Flexible, Multi-layered Security with Unified Threat Management**

The SonicWALL® TZ Series is the ultimate security platform for small and distributed networks, providing a choice between absolute ease-of-use for basic networks and unsurpassed flexibility for networks with more complex needs.

Malicious attacks can penetrate outdated stateful packet inspection firewalls. The TZ Series integrates a deep packet inspection firewall, 802.11b/g secure wireless, gateway anti-virus, anti-spyware, intrusion prevention, content filtering, failover/failback technologies and IPsec VPN capabilities into a cost-effective solution, and scales to protect your investment as your organization grows. Available in multiple hardware and node configurations including the **SonicWALL TZ 150, TZ 180 and TZ 190**, the TZ Series is ideal for small businesses, remote and branch offices and retail/point-of-sale deployments.

Securing networks against today's sophisticated attacks demands Unified Threat Management (UTM). Every TZ Series appliance is available as a SonicWALL® TotalSecure™ solution, a convenient and affordable solution that combines the hardware and all the services needed for comprehensive network protection from a wide range of network threats including viruses, spyware, worms, Trojans, keyloggers and other malicious threats. Together, these components form a UTM solution that delivers exceptional security to protect against emerging threats.

### Features and Benefits

A configurable **high-performance deep packet inspection** firewall provides enterprise-class protection for key Internet services such as Web, e-mail, file transfer, Windows services and DNS.

**Gateway anti-virus, anti-spyware and intrusion prevention** provides real-time security against the latest viruses, spyware, software vulnerabilities and other malicious code.

The TZ 190 features a modular design that **supports 3G and analog modem PC cards** for use as either a primary or secondary WAN connection.

Integrated and **automated WAN failover and failback** ensures continuous uptime by failing over to an alternate WAN connection should the primary fail.

**Secure 802.11b/g wireless LAN** technologies provide WPA2 or IPsec secured high-speed wireless connectivity.

SonicWALL PortShield Architecture provides the flexibility to configure **port level security** for the LAN, providing protection between devices inside the LAN.

**Intuitive configuration wizards** simplify even the most complicated tasks, including VPN set-up, NAT configuration and public server configuration.

Award-winning **Global Management System (GMS)** provides comprehensive global management and reporting tools for simplified configuration, enforcement and management from a central location.

Consult the Key Features table for a list of features supported on each product.

#### TZ 150/TZ 150 Wireless

An entry level security platform delivering business-class protection to small offices in an easy-to-use, affordable solution.

#### TZ 180/TZ 180 Wireless

A high-performance network security platform that provides threat protection for home, small, remote and branch offices.

#### TZ 190/TZ 190 Wireless

A complete network security platform for small businesses, branch offices or portable networks that adds modular PC and WAN support.

- **High-performance deep packet inspection firewall**
- **Real-time gateway anti-virus, anti-spyware and intrusion prevention**
- **Support for 3G and analog modem PC cards**
- **Automated WAN failover and failback**
- **Secure 802.11b/g wireless LAN**
- **Port level security**
- **Intuitive configuration wizards**
- **Global management and reporting**

## SonicWALL TZ Series - Wired and Wireless Security for Mission-critical Networks

### Key Features



| Features  | TZ 150 Series | TZ 180 Series               | TZ 190 Series |
|---|---------------|-----------------------------|---------------|
| Interfaces  | 5 Ethernet    | 7 Ethernet                  | 10 Ethernet   |
| SonicOS Version   | Standard      | Standard                    | Enhanced      |
| Upgradeable to SonicOS Enhanced   | No            | Yes                         | N/A           |
| Site-to-Site VPN Tunnels Max  | 2             | 10 Node = 2<br>25 Node = 10 | 15            |
| Bundled Global VPN Clients for Remote Access                            | 0             | 10 Node = 0<br>25 Node = 1  | 2             |
| Maximum Global VPN Clients  | 2             | 10 Node = 5<br>25 Node = 25 | 25            |
| Deep Packet Inspection Firewall   | S             | S                           | S             |
| Packet Inspection Firewall  | S             | S                           | S             |
| Easy-to-Follow Configuration Wizards                                    | S             | S                           | S             |
| Streamlined GUI   | S             | S                           | S             |
| Wireless Firewalling  | S             | S                           | S             |
| Wireless Intrusion Detection Services                                   | S             | S                           | S             |
| Wireless Guest Services   | S             | S                           | S             |
| Lightweight HotSpot Messaging   | S             | S                           | S             |
| Inter-zone Scanning   | S             | S                           | S             |
| Voice over IP (VoIP) Security   | S             | S                           | S             |
| Manageable via SonicWALL's Award-winning Global Management System (GMS) | S             | S                           | S             |
| Optional 802.11b/g Wireless LAN   | S             | S                           | S             |
| Advanced Wireless Security  |               |                             |               |
| IPSec over WLAN   | S             | S                           | S             |
| WPA   | S             | S                           | S             |
| WPA2  | -             | S                           | S             |
| Payment Card Industry (PCI) Compliance                                  | S             | S                           | S             |
| Performance Optimized Mode  | -             | S                           | S             |
| PortShield Security   | -             | O                           | S             |
| Integrated and Automated Failover and Failback                          | -             | O                           | S             |
| Object-based Management   | -             | O                           | S             |
| Policy-based NAT  | -             | O                           | S             |
| Load Balancing  | -             | O                           | S             |
| SonicPoint Management   | -             | O                           | S             |
| Configurable Optional Port  | -             | TZ 180 = S<br>TZ 180 W = O  | S             |
| 3G Wireless WAN PC Card Support*  | -             | -                           | S             |
| Analog Modem PC Card Support*   | -             | -                           | S             |

S = Standard Feature O = Optional Upgrade -- = Feature Not Available

\*Card not included. See <http://www.sonicwall.com/us/tz190cards.html> for supported 3G PCMCIA Type II cards and analog modem PCMCIA cards.

### SonicOS



SonicOS Standard allows rapid deployment in basic networks with a user-friendly Web interface and powerful configuration wizards. Building upon SonicOS Standard, SonicOS Enhanced is a sophisticated software upgrade that integrates a host of advanced features to meet the business continuity, configuration flexibility and management requirements of complex networks today and into the future.

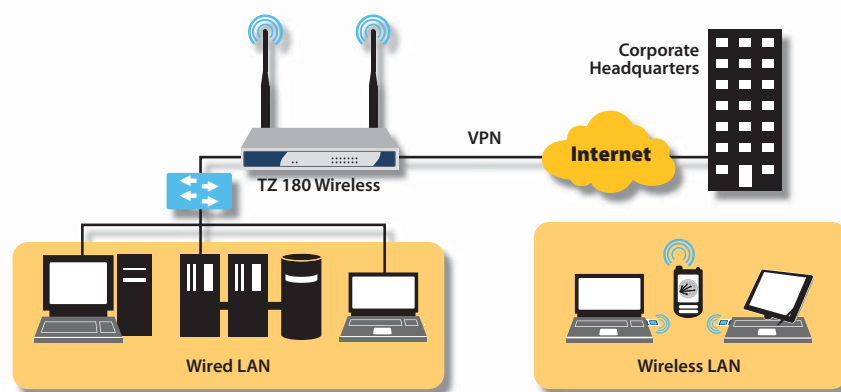
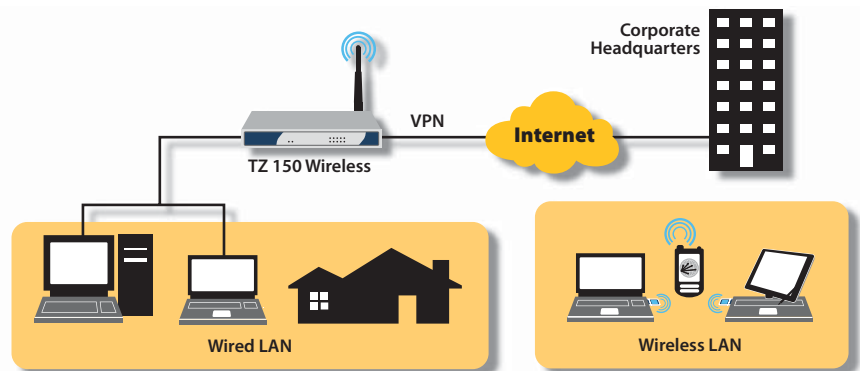
**SonicWALL's  
TZ Series is the  
ultimate security  
platform for  
small and  
distributed  
networks,  
including remote  
and branch  
offices and  
retail/POS  
deployments**

## Applications

### SonicWALL TZ 150 Series

Ideal for home and small offices, the TZ 150 Series integrates a deep packet inspection firewall, IPSec 3DES/AES VPN and 802.11b/g secure wireless capabilities in an easy-to-use, low cost platform.

- Compact form factor includes a single Ethernet WAN port and four-port auto-MDIX LAN switch
- Supports gateway anti-virus, anti-spyware, intrusion prevention and content filtering for true layered security
- Designed to exceed the performance requirements of typical business DSL and cable broadband services



### SonicWALL TZ 180 Series

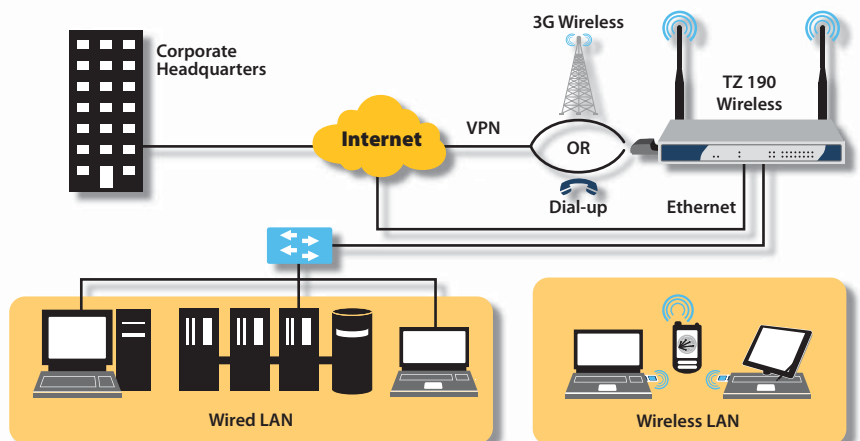
Designed as a complete Unified Threat Management (UTM) platform delivering business-class protection to small, remote and branch office networks, the TZ 180 Series features an integrated 5-port auto-sensing MDIX switch and configurable optional port.

- Exceptionally fast Unified Threat Management (UTM) performance on networks running gateway anti-virus, anti-spyware and intrusion prevention
- Integrated 802.11b/g wireless LAN with WPA2 support delivers increased security and flexibility as well as greater range for wireless users
- Inter-zone scanning combines with Unified Threat Management protection to eliminate threats no matter where they originate—inside or outside the network
- The TZ 180 delivers twice the UTM scanning speed as the TZ 170 and provides compelling new features such as a security dashboard for real-time threat monitoring and WPA2 support

### SonicWALL TZ 190 Series

The flagship of the SonicWALL TZ Series, the TZ 190 is a high-performance security platform that integrates a Type II PC Card slot for WAN backup for small networks with mission-critical needs. The TZ 190 also includes automated failover/failback, a deep packet inspection firewall and optional 802.11b/g wireless LAN access. Building on the capabilities of the TZ 180 Series, the TZ 190 Series provides additional functionality including:

- Rapidly establish secure 3G wireless broadband network access in an instant without the need for a fixed Internet connection
- Adherence to PCI standards make this the ultimate solution for retail point-of-sale merchants and service providers who require secure transmission of customer information
- Modular design enables the use of a wide range of PC cards (3G, analog modem) for greater usage flexibility



# Specifications

## SonicWALL TZ Series

| Features                                     | TZ 150 Series   | TZ 180 Series   | TZ 190 Series  |
|--|---|---|--|
| <b>Nodes Supported</b>                       | 10  | 10/25   | Unrestricted   |
| <b>Deep Packet Inspection Throughput</b>     |   |   |  |
| Performance Optimized Mode                   | N/A   | 20 Mbps   | 20 Mbps  |
| Recommended Mode                             | 2.5 Mbps  | 10 Mbps   | 10 Mbps  |
| <b>Connections</b>                           | 2,000   | 6,000   | 6,000  |
| <b>Policies</b>                              | 20  | 100/250*  | 250  |
| <b>Denial of Service Attack Protection</b>   | 22 classes of DoS, DDoS and scanning attacks  |   |  |
| <b>VPN</b>                                   |   |   |  |
| <b>Encryption</b>                            | DES, 3DES, AES (128, 142, 256-bit)  |   |  |
| <b>Authentication</b>                        | MD5, SHA-1  |   |  |
| <b>Key Exchange</b>                          | IKE, Manual Key, Certificates (X.509)   |   |  |
| <b>XAUTH/RADIUS</b>                          | Yes   |   |  |
| <b>L2TP/IPSec</b>                            | Yes   |   |  |
| <b>Certificate Support</b>                   | Yes   |   |  |
| <b>Dead Peer Detection</b>                   | Yes   |   |  |
| <b>DHCP Over VPN</b>                         | Yes   |   |  |
| <b>IPSec NAT Traversal</b>                   | Yes   |   |  |
| <b>Redundant VPN Gateway</b>                 | Yes   |   |  |
| <b>Global VPN Client Platforms Supported</b> | Microsoft* Windows 2000, Windows XP, Vista 32-bit   |   |  |
| <b>Networking</b>                            |   |   |  |
| <b>DHCP</b>                                  | Internal server, relay  |   |  |
| <b>NAT Modes</b>                             |   | 1:1, 1:many, many:many, transparent mode                                      | 1:1, 1:many, many:1*, many:many, flexible NAT (overlapping IPs)*, PAT*, transparent mode |
| <b>Policy-based Routing</b>                  | -   | Routing decisions based on combination of source IP, destination IP, service* |  |
| <b>Authentication</b>                        | RADIUS, internal user database  | RADIUS, Active Directory*, LDAP*, internal user database                      |  |
| <b>DDNS</b>                                  | Support for services offered by the following dynamic DNS providers: dyndns.org, yi.org, no-ip.com and changeip.com         |   |  |
| <b>User Database</b>                         | 10  | 100/150*  | 150  |
| <b>VoIP</b>                                  | Full H.323v1-5, SIP, gatekeeper support, outbound bandwidth management, call tracking and monitoring                        |   |  |
| <b>System</b>                                |   |   |  |
| <b>Zone Security</b>                         | -   | Yes*  | Yes  |
| <b>Object-based Management</b>               | -   | Yes*  | Yes  |
| <b>PortShield Security*</b>                  | -   | 5 security zones  | 8 security zones   |
| <b>Management and Monitoring</b>             | Local CLI, Web GUI (HTTP, HTTPS), SNMP v2; Global management with SonicWALL GMS   |   |  |
| <b>Logging and Reporting</b>                 | ViewPoint, Local Log and Syslog   |   |  |
| <b>Load Balancing</b>                        | -   | Yes, with percent-based, round robin and spill-over*                          |  |
| <b>Built-in Wireless LAN</b>                 |   |   |  |
| <b>Standards</b>                             | 802.11b/g, WEP, WPA, TKIP, PSK, 802.1x, EAP-PEAP, EAP-TTLS  | 802.11b/g, WEP, WPA, WPA2, 802.11i, TKIP, PSK, 802.1x, EAP-PEAP, EAP-TTLS     |  |
| <b>Antennas</b>                              | Single, nondetachable external 2 dBi diversity  | Dual, detachable, external 5 dBi diversity                                    |  |
| <b>Radio Power</b>                           | 802.11b<br>802.11g  | 13 dBm maximum<br>20 dBm maximum @ 6-48 Mbps,<br>19dBm @ 54 Mbps              |  |
| <b>Radio Receive Sensitivity</b>             | 802.11b<br>802.11g  | -89 dBm @ 11 Mbps<br>-91 dBm @ 6 Mbps, -73 dBm @ 54 Mbps                      |  |
| <b>Hardware</b>                              |   |   |  |
| <b>Memory</b>                                | 64 MB   | 128 MB  | 128 MB   |
| <b>Flash Memory</b>                          | 8 MB  | 16 MB   | 16 MB  |
| <b>Modem Dial-up</b>                         | -   | -   | With Modem PC Card**   |
| <b>Power Input</b>                           | 100 to 240 VAC, 50-60 Hz, 1 A   |   |  |
| <b>Max Power Consumption</b>                 | 8.4 W/9.9 W (TZ 150 W)  | 5.5 W/7.9 W (TZ 180 W)  | 12.7 W/15.1 W (TZ 190 W)   |
| <b>Total Heat Dissipation</b>                | 28.6 BTU/26.6 BTU (TZ 150 W)  | 26.0 BTU/34.0 BTU (TZ 180 W)  | 43.8 BTU/51.6 BTU (TZ 190 W)   |
| <b>Certifications (Pending)</b>              | ICSA Firewall 4.1, ICSA IPsec VPN 1.0d, ICSA Firewall 4.1, ICSA IPsec VPN 1.0d, FIPS 140-2, VPNC AES, Common Criteria EAL-2 |   |  |
| <b>Dimensions</b>                            | 7.5 x 6.0 x 1.1 in<br>(18.9 x 15.2 x 2.7 cm)  | 8.3 x 4.9 x 1.1 in<br>(21.1 x 12.4 x 2.8 cm)                                  | 10.0 x 7.0 x 1.2 in<br>(25.4 x 17.8 x 3.0 cm)  |
| <b>Weight</b>                                | 1.25 lbs/0.57 kg<br>1.30 lbs/0.59 kg (TZ 150 W)   | 1.40 lbs/0.64 kg<br>2.40 lbs/1.09 kg (TZ 180 W)                               | 2.00 lbs/0.92 kg<br>2.20 lbs/1.00 kg (TZ 190 W)  |
| <b>Major Regulatory Compliance</b>           | FCC Class B, ICES Class B, CE, C-Tick, VCCI Class B, MIC, NOM, UL, CUL, TUV/GS, CB, WEEE, RoHS (TZ 180/190)                 |   |  |
| <b>Environment</b>                           | 40-105° F, 5-40° C  |   |  |
| <b>MTBF</b>                                  | 9.0 Years   | 8.5 Years   | 9.6 Years  |

\*With SonicOS Enhanced. \*\*Modem card not included. See <http://www.sonicwall.com/us/tz190cards.html> for supported analog modem PCMCIA cards.



SonicWALL TZ 150  
01-SSC-5811 (International)  
SonicWALL TZ 150 Wireless  
01-SSC-5816 (International)  
SonicWALL TotalSecure 5 (TZ 150)  
01-SSC-6090 (International)  
SonicWALL TotalSecure 5 Wireless  
(TZ 150 W) 01-SSC-6091 (International)



SonicWALL TZ 180  
01-SSC-6550  
SonicWALL TZ 180 Wireless  
01-SSC-6554 (International)  
SonicWALL TZ 180 TotalSecure 10  
01-SSC-6097  
SonicWALL TZ 180 Wireless  
TotalSecure 10  
01-SSC-6099 (International)  
SonicWALL TZ 180 TotalSecure 25  
01-SSC-6085  
SonicWALL TZ 180 Wireless  
TotalSecure 25  
01-SSC-6095 (International)



SonicWALL TZ 190  
01-SSC-6850  
SonicWALL TZ 190 Wireless  
01-SSC-6853 (International)  
SonicWALL TotalSecure 3G  
(TZ 190)  
01-SSC-6087  
SonicWALL TotalSecure 3G Wireless  
(TZ 190 W)  
01-SSC-6096 (International)

### SonicWALL, Inc.

1143 Borregas Avenue  
Sunnyvale CA 94089-1306

T +1 408.745.9600  
F +1 408.745.9300

[www.sonicwall.com](http://www.sonicwall.com)

